

# The 1704

2,220 TOTAL SQ FT BEDROOMS: 3 BATHROOMS: 2 GARAGE: 2



## THE 1704

TOTAL LIVING:	1,690 SQ. FT.
GARAGE:	456 SQ. FT.
COVERED ENTRY:	160 SQ. FT.
<b>TOTAL:</b>	<b>2,220 SQ. FT.</b>

## FEATURES:

- Granite Countertops (in Kitchen and Bathrooms)
- Luxury Vinyl Plank Flooring  
(in all common areas)
- Designer Wood Cabinetry  
(w/soft close dovetail doors and drawers)
- Irrigation System (Lawn & Landscaping)
- Garbage Disposal
- GE Stainless Steel Appliances
- Decorative Wood Windowsills
- 30 Year Architectural Shingles
- Sherwin Williams Interior & Exterior Paints
- Brushed Nickel Finish Door Handles
- Maverick 10 Year Structural Warranty
- 1 Year Builder Warranty (Mechanical & Structural)
- Termite Prevention Treatment
- Ceiling Fan (in Master Bedroom & Living Room)



For more information:

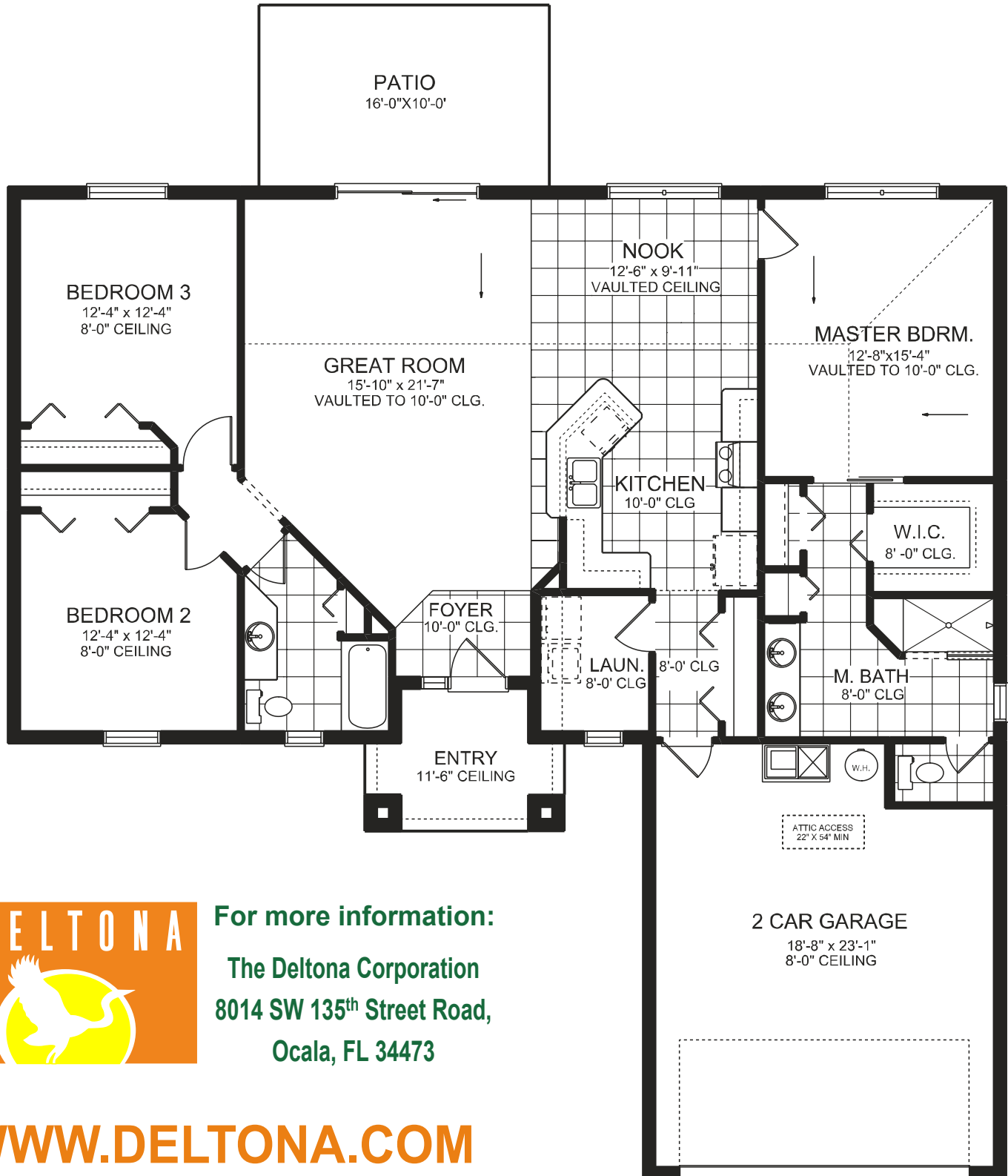
The Deltona Corporation  
8014 SW 135<sup>th</sup> Street Road,  
Ocala, FL 34473

[WWW.DELTONA.COM](http://WWW.DELTONA.COM)

352-347-2322 • **TIMBER PINES**

# The 1704

2,220 TOTAL SQ FT BEDROOMS: 3 BATHROOMS: 2 GARAGE: 2



For more information:

The Deltona Corporation  
8014 SW 135<sup>th</sup> Street Road,  
Ocala, FL 34473

[WWW.DELTONA.COM](http://WWW.DELTONA.COM)

352-347-2322 • TIMBER PINES