

# The Lavender ELEVATION B

2,200 TOTAL SQ FT BEDROOMS: 4 BATHROOMS: 2 GARAGE: 2



## THE LAVENDER (ELEVATION B)

TOTAL LIVING: 1,728 SQ. FT.

GARAGE: 453 SQ. FT.

COVERED ENTRY: 19 SQ. FT.

TOTAL: 2,200 SQ. FT.

## FEATURES:

- Granite Countertops (in Kitchen and Bathrooms)
- Luxury Vinyl Plank Flooring (in all common areas)
- Designer Wood Cabinetry (w/soft close dovetail doors and drawers)
- Irrigation System (Lawn & Landscaping)
- Garbage Disposal
- GE Stainless Steel Appliances
- Decorative Wood Windowsills
- 30 Year Architectural Shingles
- Sherwin Williams Interior & Exterior Paints
- Brushed Nickel Finish Door Handles
- Maverick 10 Year Structural Warranty
- 1 Year Builder Warranty (Mechanical & Structural)
- Termite Prevention Treatment
- Ceiling Fan (in Master Bedroom & Living Room)



For more information:

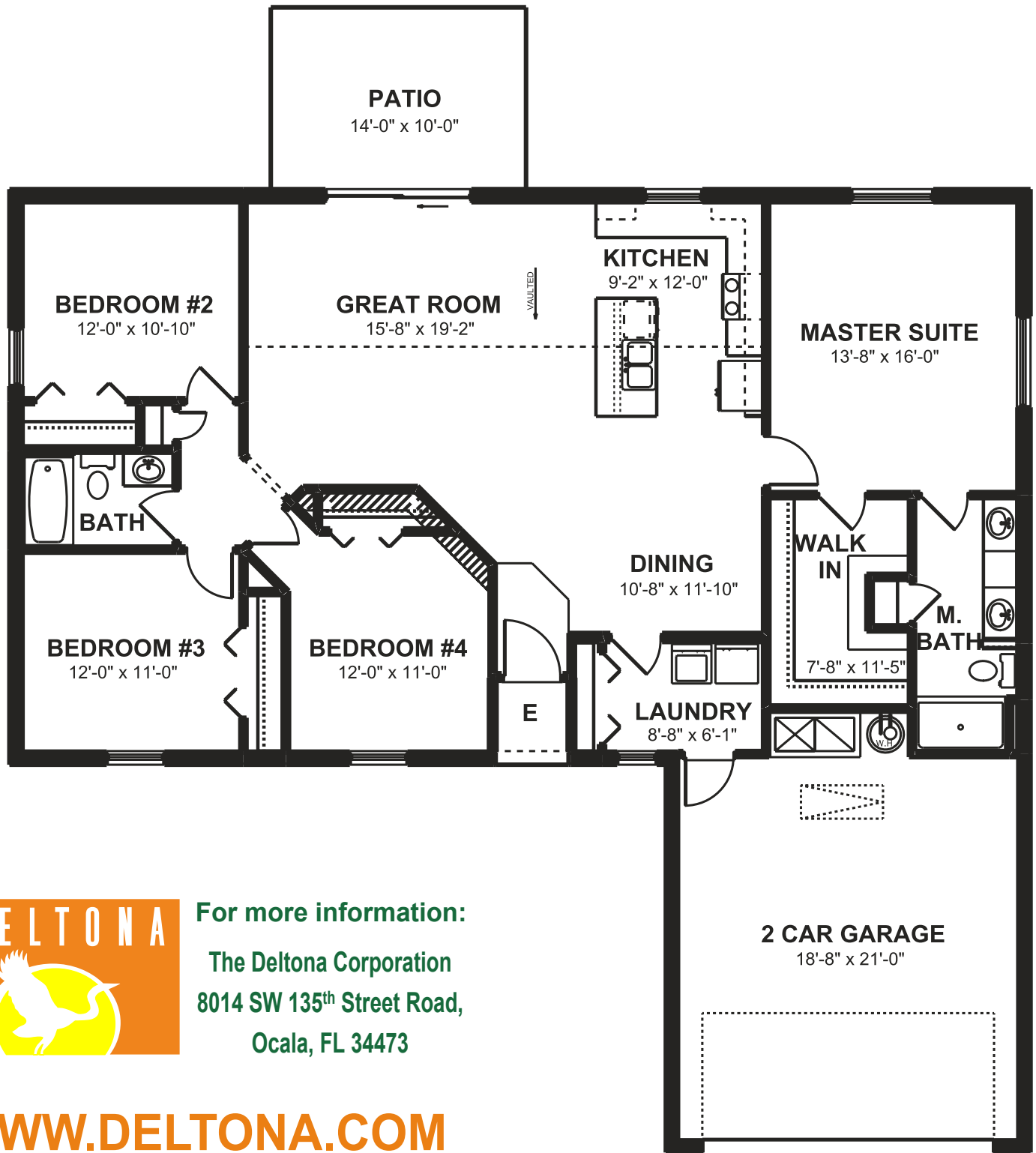
The Deltona Corporation  
8014 SW 135<sup>th</sup> Street Road,  
Ocala, FL 34473

[WWW.DELTONA.COM](http://WWW.DELTONA.COM)

352-347-2322 • TIMBER PINES

# The Lavender ELEVATION B

2,200 TOTAL SQ FT BEDROOMS: 4 BATHROOMS: 2 GARAGE: 2



For more information:

The Deltona Corporation  
8014 SW 135<sup>th</sup> Street Road,  
Ocala, FL 34473

[WWW.DELTONA.COM](http://WWW.DELTONA.COM)

352-347-2322 • TIMBER PINES