

The Sage

ELEVATION B

1,978 TOTAL SQ FT BEDROOMS: 3 BATHROOMS: 2 GARAGE: 2



THE SAGE (ELEVATION B)

TOTAL LIVING:	1,556 SQ. FT.
GARAGE:	382 SQ. FT.
COVERED ENTRY:	40 SQ. FT.
TOTAL:	1,978 SQ. FT.

FEATURES:

- Granite Countertops (in Kitchen and Bathrooms)
- Luxury Vinyl Plank Flooring (in all common areas)
- Designer Wood Cabinetry (w/soft close dovetail doors and drawers)
- Irrigation System (Lawn & Landscaping)
- Garbage Disposal
- GE Stainless Steel Appliances
- Decorative Wood Windowsills
- 30 Year Architectural Shingles
- Sherwin Williams Interior & Exterior Paints
- Brushed Nickel Finish Door Handles
- Maverick 10 Year Structural Warranty
- 1 Year Builder Warranty (Mechanical & Structural)
- Termite Prevention Treatment
- Ceiling Fan (in Master Bedroom & Living Room)



For more information:

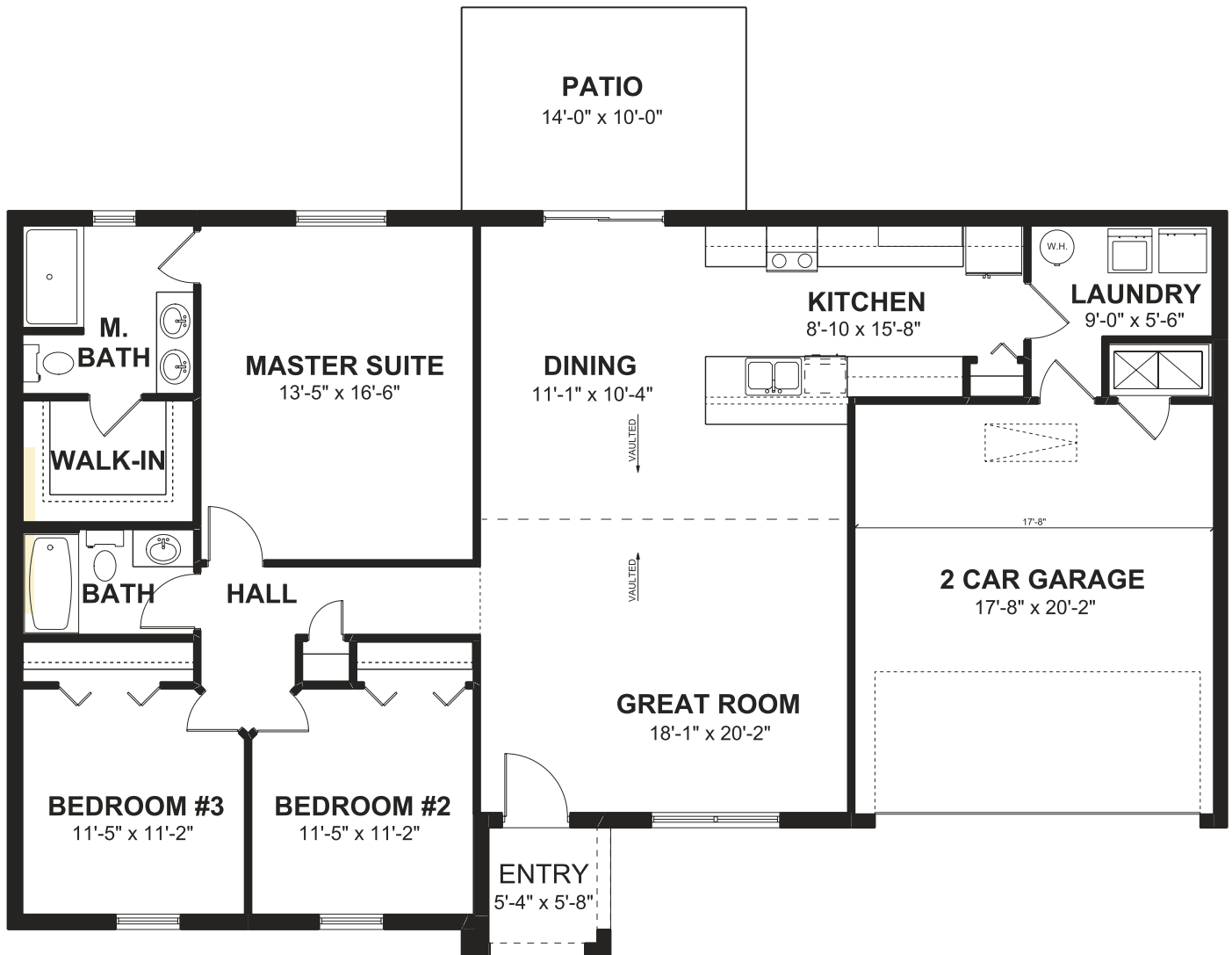
The Deltona Corporation
8014 SW 135th Street Road,
Ocala, FL 34473

WWW.DELTONA.COM

352-480-5002 • GLEN AIRE

The Sage ELEVATION B

1,978 TOTAL SQ FT BEDROOMS: 3 BATHROOMS: 2 GARAGE: 2



For more information:

The Deltona Corporation
8014 SW 135th Street Road,
Ocala, FL 34473

WWW.DELTONA.COM

352-480-5002 • GLEN AIRE